



Gavin Rudolph
Non-Principal Property Practitioner
Registered with PPRA (FFC 117 094 8)
082 554 3784
gavin.r@rawson.co.za



Rawson Blaauwberg Commercial
0790229240

marketing.cmb@rawson.co.za

Contact Rawson Commercial
Cape Metropole - Blouberg Franchise

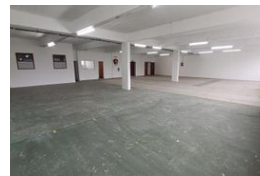
021 5562474

9 Blaauwberg Road
Blouberg
7441

950m² Office To Let in Maitland



Web Ref CL18093



R52,250 pm

Gross Monthly Rental R52,250 Excl. VAT

0 15

Versatile Commercial Space Available at Perth House, Maitland

Perth House, located at 195 Voortrekker Road in the heart of Maitland, offers first floor space designed to meet a variety of business needs. Positioned next to McDonald's and surrounded by essential services and amenities, this property ensures high visibility and convenience. With easy access to the N1, N7, and M5 highways, and within walking distance to public transport routes, Perth House is perfectly situated for both staff and clients.

Property Features:

- First floor offers 950m² floor, with flexible layouts for offices, warehouses, or factory space
- 100 Amp 3-phase power available throughout the building
- Secure, paved yard with ample parking, perimeter fencing, and a single back entrance gate
- Various office spaces, storage solutions, strong room, separate kitchens, and private bathrooms

Features

Building Name	Perth House Commercial				
Zoning					
Interior		Exterior		Sizes	
Power 3 Phase	Yes	Security	Yes	Floor Size	950m ²
Power Amps	100	Open Parking Bays	15	Building Height	3m
Extras					
Security					

