



Amelia Viljoen
0726426465
amelia.v@rawson.co.za

Contact Rawson Commercial
Cape Metropole - Blouberg Franchise

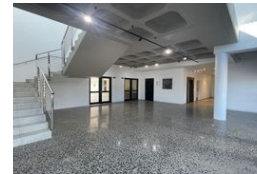
021 5562474

9 Blaauwberg Road
Blouberg
7441

98m² Office To Let in Durbanville Central



Web Ref CL16888



R23,030 pm

Gross Monthly Rental R23,030 Excl. VAT

0 2

Office space TO RENT in Durbanville

Ground Floor Medical Consulting Rooms available in Durbanville.

17 Somerset Crescent offers two levels of medical suites newly built in Durbanville. Close to the Durbanville Mediclinic Just off Wellington Road. This secure building is fully fenced with electric fencing monitored by ADT as well as the security cameras. The building has 14 unreserved visitor parking bays. Lift and stair access to each floor and communal bathrooms on each level. 2 Reserved parking bays are included in the rental amount. Medical waste room on the premises and a 90Kva generator.

This 98m2 airconditioned medical suite is available on the first floor. This open space has a beautifully fitted kitchenette and is ready to be fitted by the new tenant. Ample light enters through the windows.

Prepaid electricity and water meter

Features

Zoning Commercial

Interior

Air Conditioning Yes

Exterior

Security Yes
Open Parking Bays 2
Parking Ratio 3 bays / 100 m²

Sizes

Floor Size 98m²

Extras

Electricity & Water & Refuse

