



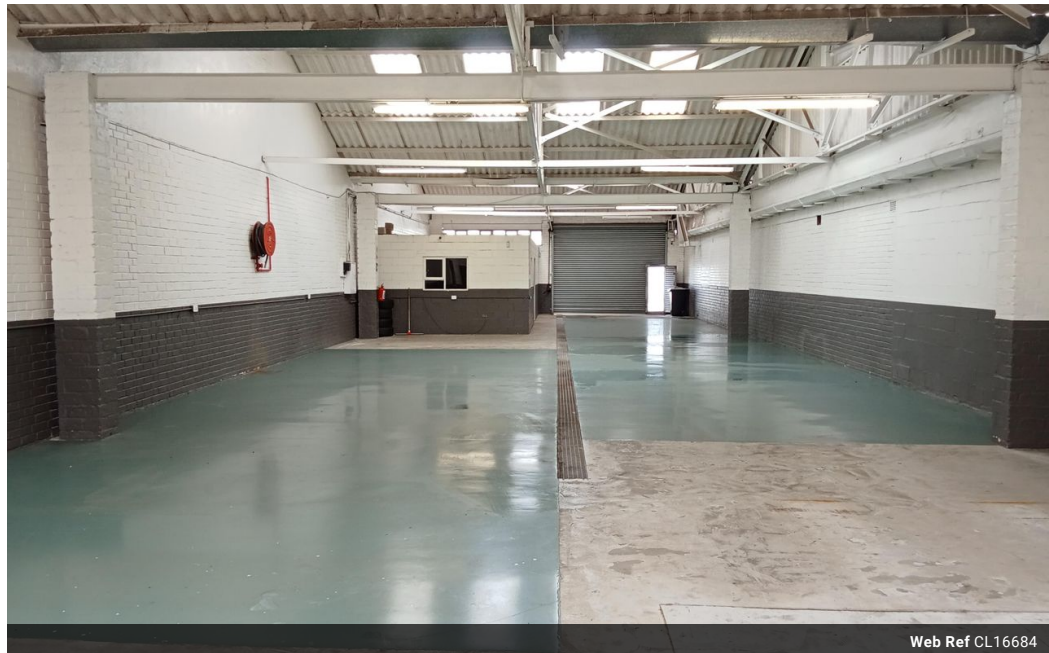
Gavin Rudolph
Non-Principal Property
Practitioner
Registered with PPRA
(FFC 117 094 8)
082 554 3784
gavin.r@rawson.co.za

Contact Rawson Commercial
Cape Metropole - Blouberg
Franchise

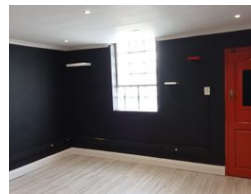
021 5562474

9 Blaauwberg Road
Blouberg
7441

388m² Warehouse For Sale in Maitland



Web Ref CL16684



R2,500,000

0 2

388m² Warehouse for sale in Maitland

Unit 5 Kiara Park, located on 15th Ave in Maitland, presents an excellent opportunity to acquire a sizeable warehouse. This spacious and affordable open-plan warehouse is currently tenanted and situated in a well-established industrial mini park just off Voortrekker Road.

The unit boasts two exclusive secure parking bays and 24-hour on-site security for added peace of mind. With convenient drive-in access and multiple tenants within the park, this property offers a high level of security and flexibility. The installation of an alarm system and pre-paid electricity further enhances the functionality and convenience of this warehouse. Additionally, an automated roller door ensures effortless access and smooth operations.

Features

Title	Sectional				
Zoning	Industrial				
Interior		Exterior		Sizes	
Power 3 Phase	Yes	Security	Yes	Floor Size	388m ²
Power Amps	60	Open Parking Bays	2		

