



Nico Human
Non-Principal Property Practitioner
Registered with PPRA (FFC 113 663 3)
082 770 2128
nico.human@rawson.co.za



Rudi Papenfus
0849838226
rudi.p@rawson.co.za

Contact Rawson Commercial
Cape Metropole - Blouberg Franchise

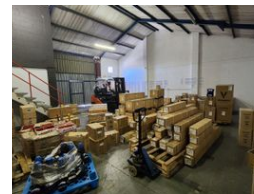
021 5562474

9 Blaauwberg Road
Blouberggrant
7441

186m² Warehouse To Let in Stikland Industrial



Web Ref CL18525



R14,880 pm

Gross Monthly Rental R14,880 Excl. VAT

0 3

186m² WAREHOUSE TO LET IN STIKLAND

Compact 186m² Warehouse for Rent in Stikland - Ideal for Manufacturing or Warehousing

This versatile 186m² warehouse in Stikland offers the perfect setup for manufacturing, warehousing, distribution, or serving as a base of operations. Centrally located in Bellville's bustling industrial area, it combines convenience, functionality, and accessibility for businesses of all sizes.

Key Features

- Office Setup: Includes a standard office, large offices upstairs, and a welcoming reception area to accommodate your team and clients.
- Efficient Layout: Features a roller shutter door for smooth loading, secure park access, and ample natural light in the office spaces.
- Amenities: Equipped with a kitchenette and separate ablutions for both office and warehouse staff.

Features

Building Name Unit2
Zoning Industrial

Interior
Power 3 Phase Yes
Power Amps 80

Exterior
Open Parking Bays 3

Sizes
Floor Size 186m²
Building Height 7m

