



Nico Human
Non-Principal Property Practitioner
Registered with PPRA (FFC 113 663 3)
082 770 2128
nico.human@rawson.co.za



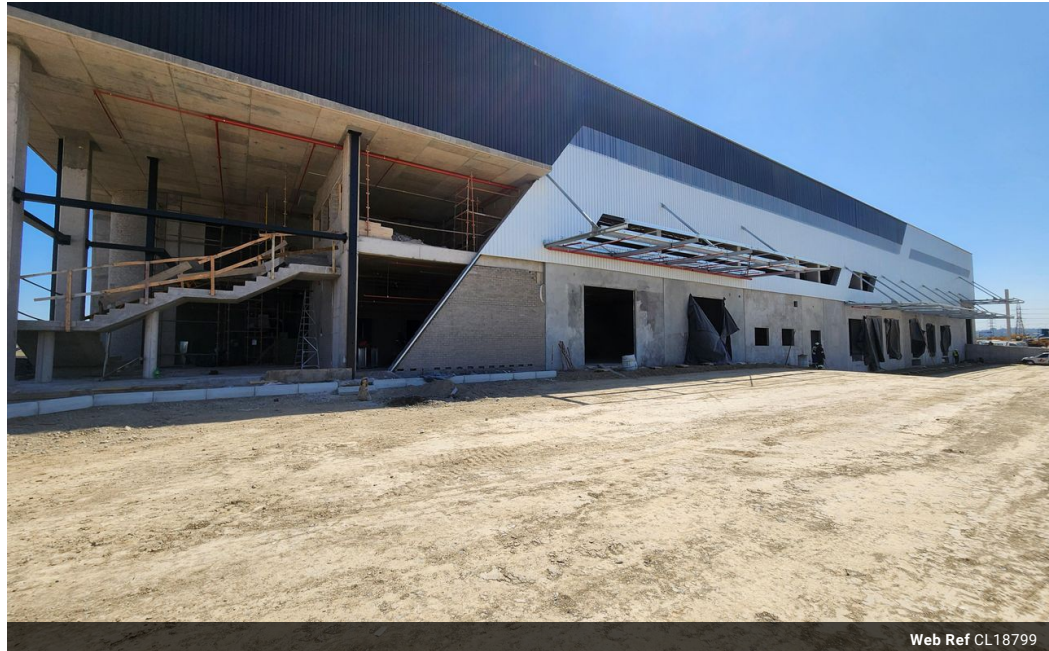
Rudi Papenfus
0849838226
rudi.p@rawson.co.za

Contact Rawson Commercial
Cape Metropole - Blouberg Franchise

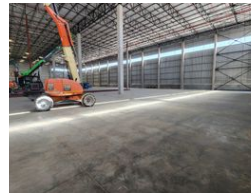
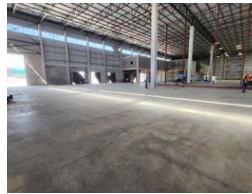
021 5562474

9 Blaauwberg Road
Blouberggrant
7441

629m² Warehouse To Let in Stikland Industrial



Web Ref CL18799



R69,190 pm

Gross Monthly Rental R69,190 Excl. VAT

0 4

629m² WAREHOUSE TO LET IN BELLVILLE

****Brand-New 629m² Warehouse in Bellville - Prime Location with R300 Highway Exposure****

This modern A-grade warehouse offers an exceptional opportunity in a prime location, providing excellent visibility and signage potential onto the R300 Highway. Designed for efficiency and convenience, this unit is ideal for warehousing, light manufacturing, distribution, and various commercial uses.

****Key Features:****

- Large reception area with air conditioning
- Spacious open-plan office upstairs
- Excellent warehouse floor space with good height to eaves
- LED lighting for energy efficiency
- Roller shutter door for easy loading and offloading
- Separate ablutions for office and warehouse staff
- Kitchenette
- Pre-paid 3-phase electricity (60 amps)
- Secure access-controlled business park

Features

Building Name	Unit 1			
Zoning	Industrial			
Interior		Exterior		Sizes
Air Conditioning	Yes	Security	Yes	Floor Size
Power 3 Phase	Yes	Open Parking Bays	4	Building Height
Power Amps	60			629m ²
				7m

