



Nico Human
Non-Principal Property Practitioner
Registered with PPRA (FFC 113 663 3)
082 770 2128
nico.human@rawson.co.za



Rudi Papenfus
0849838226
rudi.p@rawson.co.za

Contact Rawson Commercial
Cape Metropole - Blouberg Franchise

021 5562474

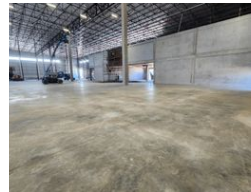
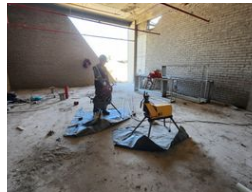
9 Blaauwberg Road
Blouberggrant
7441

397m² Warehouse To Let in Stikland Industrial

FEATURED



Web Ref CL18801



R43,670 pm

Gross Monthly Rental R43,670 Excl. VAT

0 0

397m² WAREHOUSE TO LET IN BELLVILLE

Brand-New 397m² Warehouse in Bellville - Prime Location with R300 Highway Exposure

This modern A-grade warehouse offers an exceptional opportunity in a prime location, providing excellent visibility and signage potential onto the R300 Highway. Designed for efficiency and convenience, this unit is ideal for warehousing, light manufacturing, distribution, and various commercial uses.

Key Features:

Large reception area with air conditioning

Spacious open-plan office upstairs

Excellent warehouse floor space with good height to eaves

LED lighting for energy efficiency

Roller shutter door for easy loading and offloading

Features

Building Name Unit 3
Zoning Industrial

Interior
Air Conditioning Yes
Power 3 Phase Yes
Power Amps 60

Exterior
Security Yes

Sizes
Floor Size 397m²
Building Height 7m

