



**Nico Human**  
Non-Principal Property Practitioner  
Registered with PPRA (FFC 113 663 3)  
082 770 2128  
nico.human@rawson.co.za



**Rudi Papenfus**  
0849838226  
rudi.p@rawson.co.za

Contact Rawson Commercial  
Cape Metropole - Blouberg Franchise

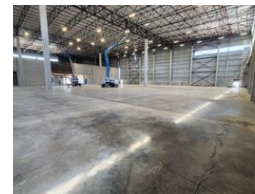
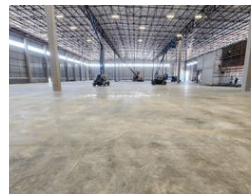
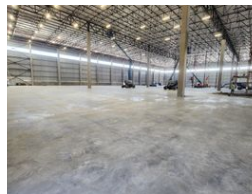
021 5562474

9 Blaauwberg Road  
Blouberg  
7441

400m<sup>2</sup> Warehouse To Let in Stikland Industrial



Web Ref CL18802



R44,000 pm

Gross Monthly Rental R44,000 Excl. VAT

0 4

## 400m<sup>2</sup> WAREHOUSE TO LET IN BELLVILLE

Brand-New 400m<sup>2</sup> Warehouse in Bellville - Prime Location with R300 Highway Exposure

This modern A-grade warehouse offers an exceptional opportunity in a prime location, providing excellent visibility and signage potential onto the R300 Highway. Designed for efficiency and convenience, this unit is ideal for warehousing, light manufacturing, distribution, and various commercial uses.

Key Features:

Large reception area with air conditioning

Spacious open-plan office upstairs

Excellent warehouse floor space with good height to eaves

LED lighting for energy efficiency

Roller shutter door for easy loading and offloading

## Features

**Building Name** Unit 4  
**Zoning** Industrial

**Interior**  
Air Conditioning  
Power 3 Phase  
Power Amps

Yes

Yes

60

**Exterior**  
Security  
Open Parking Bays

Yes

4

**Sizes**  
Floor Size  
Building Height

400m<sup>2</sup>

7m

