



Nico Human
Non-Principal Property Practitioner
Registered with PPRA (FFC 113 663 3)
082 770 2128
nico.human@rawson.co.za



Rudi Papenfus
0849838226
rudi.p@rawson.co.za

Contact Rawson Commercial
Cape Metropole - Blouberg Franchise

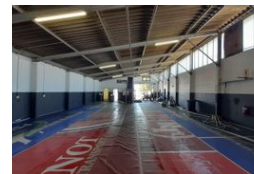
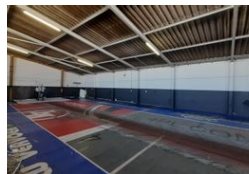
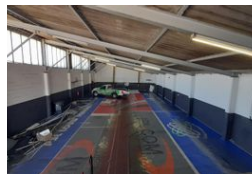
021 5562474

9 Blaauwberg Road
Blouberggrant
7441

335m² Warehouse To Let in Stikland Industrial



Web Ref CL18842



R22,450 pm

Gross Monthly Rental R22,450 Excl. VAT

0 4

335m2 WAREHOUSE TO RENT IN BELLVILLE

335m2 Warehouse To Let in Bellville - Prime Exposure in the Industrial Hub
This 335m2 warehouse is ideally positioned in the heart of Bellville's established industrial area, offering excellent visibility and signage opportunities for businesses looking to stand out. The location ensures easy access to key transport routes including Van Riebeeck Road, Strand Road, La Belle Road, Bottelary Road, the R300, and the N1.
The warehouse features well-balanced office and floor space, with ample natural light and efficient access for trucks. It's suited for a variety of commercial operations including warehousing, light manufacturing, and distribution.

Key Features:
Excellent location with high visibility

Security gate and controlled access

Standard office space plus dedicated warehouse offices

Features

Building Name	Unit 18			
Zoning	Industrial			
Interior		Exterior		Sizes
Power 3 Phase	Yes	Security	Yes	Floor Size
Power Amps	80	Open Parking Bays	4	Building Height
				335m ²
				6m

