



Nico Human
Non-Principal Property Practitioner
Registered with PPRA (FFC 113 663 3)
082 770 2128
nico.human@rawson.co.za



Rudi Papenfus
0849838226
rudi.p@rawson.co.za

Contact Rawson Commercial
Cape Metropole - Blouberg Franchise

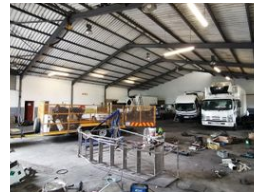
021 5562474

9 Blaauwberg Road
Blouberg
7441

580m² Warehouse To Let in Triangle Farm



Web Ref CL18456



R33,000 pm

Gross Monthly Rental R33,000 Excl. VAT

0 10

580m2 WAREHOUSE TO LET IN TRIANGLE FARM

Prime 580m2 Warehouse in Triangle Farm - Available 1 January 2025

Position your business for success with this well-located 580m2 warehouse in the sought-after Triangle Farm industrial hub. Boasting excellent visibility and a prime signage opportunity, this property is designed to enhance your operations and brand presence.

Key Features:

- **Optimal Space:** Ample office and storage areas paired with excellent floor space for streamlined operations.
- **Access & Logistics:** Easy truck access and a large roller shutter door ensure seamless loading and distribution.
- **Versatility:** Ideal for warehousing, light manufacturing, distribution, or various commercial uses.
- **Convenience:** Centrally located with quick access to Brug Street, Strand Road, Peter Barlow Drive, the R300, and N2.

Features

Zoning Industrial

Interior
Power 3 Phase Yes
Power Amps 60

Exterior
Open Parking Bays 10

Sizes
Floor Size 580m²
Building Height 6m

