



**Nico Human**  
Non-Principal Property Practitioner  
Registered with PPRA (FFC 113 663 3)  
082 770 2128  
nico.human@rawson.co.za



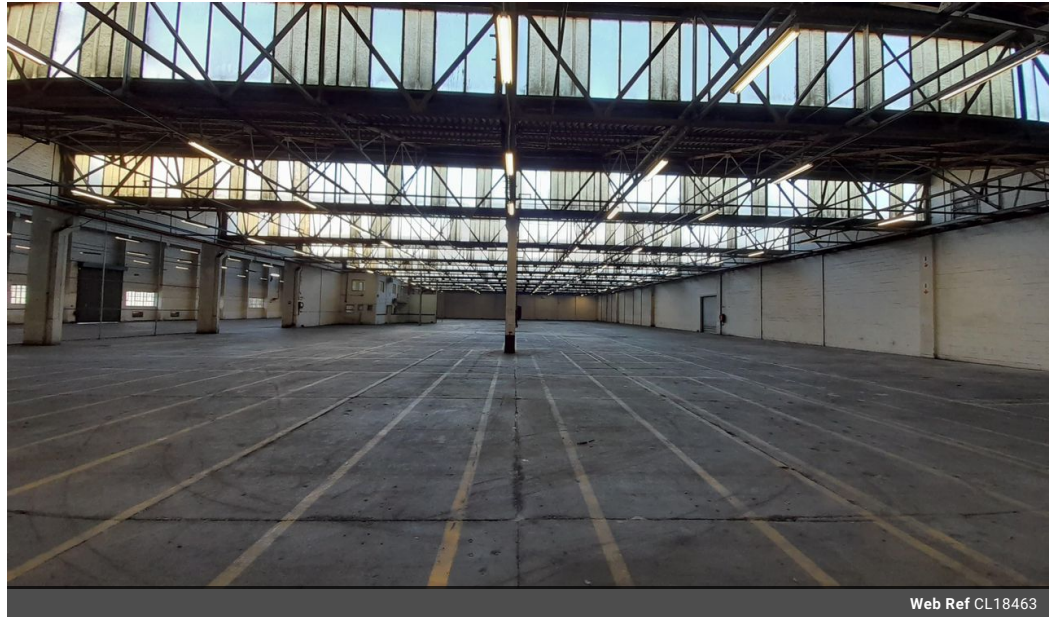
**Rudi Papenfus**  
0849838226  
rudi.p@rawson.co.za

Contact Rawson Commercial  
Cape Metropole - Blouberg Franchise

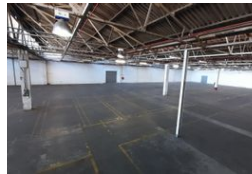
021 5562474

9 Blaauwberg Road  
Blouberggrant  
7441

5,134m<sup>2</sup> Warehouse To Let in Blackheath Industrial



Web Ref CL18463



R300,000 pm

Gross Monthly Rental R300,000 Excl. VAT

0 5

## 5134m2 WAREHOUSE TO LET IN BLACKHEATH

**\*\*Massive 5132m2 Industrial Warehouse in Blackheath Industrial - Ready on Short Notice!\*\***

Elevate your business with this **\*\*spacious and secure warehouse\*\*** in the heart of Blackheath Industrial. Situated within an **\*\*access-controlled business park\*\***, this property provides **\*\*24-hour security\*\***, **\*\*floodlighting\*\***, and **\*\*truck access control\*\***, ensuring seamless and secure operations for large-scale businesses.

**\*\*Prime Location Benefits:\*\***

- Centrally located with easy access to Van Riebeeck Road, Polkadraai Road, R300, N2, and N1.
- Close to public transport options, including buses, trains, and taxis, for employee convenience.

**\*\*Ideal For:\*\***

Warehousing, light manufacturing, and distribution operations.

**\*\*Key Features Include:\*\***

- Impressive **\*\*8m height to eaves\*\***, perfect for high stacking.

## Features

<b>Building Name</b>	Unit 2C			<b>Sizes</b>	
<b>Zoning</b>	Industrial			Floor Size	5,134m <sup>2</sup>
<b>Interior</b>		<b>Exterior</b>		Building Height	7m
Power 3 Phase	Yes	Security	Yes		
Power Amps	150	Open Parking Bays	5		

