



**Nico Human**  
Non-Principal Property Practitioner  
Registered with PPRA (FFC 113 663 3)  
082 770 2128  
nico.human@rawson.co.za



**Rudi Papenfus**  
0849838226  
rudi.p@rawson.co.za

Contact Rawson Commercial  
Cape Metropole - Blouberg Franchise

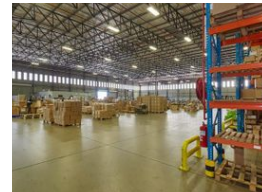
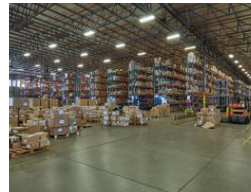
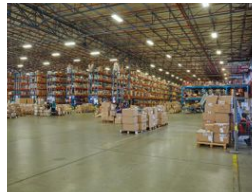
021 5562474

9 Blaauwberg Road  
Blouberggrant  
7441

27,340m<sup>2</sup> Warehouse To Let in Brackenfell Central



Web Ref CL18627



R2,734,000 pm

Gross Monthly Rental R2,734,000 Excl. VAT

0 30

## 27340m2 WAREHOUSE TO LET IN BRACKENFELL

### 27340m2 A-Grade Warehouse To Rent in Brackenfell - Prime Location with Unmatched Size and Power Capacity

This **vast 27340m2 A-grade warehouse** is located in the **highly sought-after Brackengate Business Park**, just off the R300, offering **exceptional visibility** and **prime signage opportunities**. Perfect for businesses requiring **significant operational space**, this unit is ideal for **warehousing, distribution, heavy manufacturing (1.5MVA)**, and various commercial purposes.

### Major Highlights:

- **Impressive size** of **27340m2**, providing extensive space for large-scale operations, warehousing, and manufacturing
- **3-phase power supply** with a robust **1.5MVA**, meeting the needs of heavy manufacturing and industrial equipment

## Features

**Zoning** Industrial

### Interior

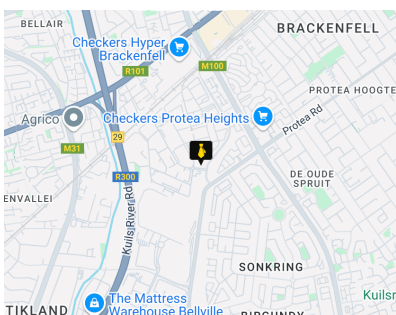
Air Conditioning	Yes
Power 3 Phase	Yes
Power Amps	1500

### Exterior

Security	Yes
Open Parking Bays	30

### Sizes

Floor Size	27,340m <sup>2</sup>
Building Height	13m



<https://www.warehouses4africa.com>