



**Nico Human**  
Non-Principal Property Practitioner  
Registered with PPRA (FFC 113 663 3)  
082 770 2128  
nico.human@rawson.co.za



**Rudi Papenfus**  
0849838226  
rudi.p@rawson.co.za

Contact Rawson Commercial  
Cape Metropole - Blouberg Franchise

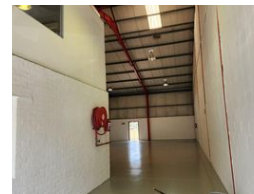
021 5562474

9 Blaauwberg Road  
Blouberggrant  
7441

266m<sup>2</sup> Warehouse To Let in Brackenfell Industrial



Web Ref CL18457



R21,280 pm

Gross Monthly Rental R21,280 Excl. VAT

0 3

## 266m2 WAREHOUSE TO LET IN BRACKENFELL

### Secure 266m2 Warehouse in Brackenfell - Available Immediately

Discover a versatile and secure workspace with this 266m2 warehouse located in a sought-after business park in Brackenfell. Perfectly suited for light manufacturing, warehousing, distribution, and various commercial ventures, this unit offers both functionality and convenience.

### Key Features:

- \*\*Strategic Location:\*\* Easy access to Old Paarl Road, Okavango Road, Brackenfell Boulevard, the R300, and N1 ensures seamless connectivity.
- \*\*Natural Light & Space:\*\* Excellent natural light and good height to eaves create a productive and welcoming environment.
- \*\*Enhanced Utility:\*\* A mezzanine floor above the offices adds additional flexible space.

## Features

<b>Building Name</b>	B9	<b>Exterior</b>		<b>Sizes</b>	
<b>Zoning</b>	Industrial	<b>Security</b>	Yes	<b>Floor Size</b>	266m <sup>2</sup>
<b>Interior</b>		<b>Open Parking Bays</b>	3	<b>Building Height</b>	7m
Power 3 Phase	Yes				
Power Amps	63				

