



Nico Human
Non-Principal Property Practitioner
Registered with PPRA (FFC 113 663 3)
082 770 2128
nico.human@rawson.co.za



Rudi Papenfus
0849838226
rudi.p@rawson.co.za

Contact Rawson Commercial
Cape Metropole - Blouberg Franchise

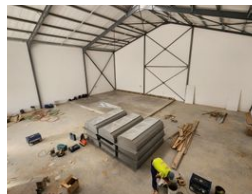
021 5562474

9 Blaauwberg Road
Blouberggrant
7441

417m² Warehouse To Let in Fisantekraal Industrial



Web Ref CL18772



R37,100 pm

Gross Monthly Rental R37,100 Excl. VAT

0 4

417m² WAREHOUSE TO LET IN FISANTEKRAAL

****Brand New 417m² Warehouse in Fisantekraal Industrial - Perfect for Warehousing and Distribution****

This newly built 417m² warehouse is available for rent in Fisantekraal Industrial, offering a prime location within an access-controlled business park. With excellent access from Wellington Road, this space is ideal for warehousing, light manufacturing, distribution, or as a base of operations.

****Key Features:****

- Large reception area
- Open-plan office upstairs
- Separate ablutions for office and warehouse staff
- Large roller shutter door for easy loading and offloading
- Ample parking space
- Excellent height to eaves and peak
- 3-phase, 60-amp power
- Bright and spacious warehouse floor with good natural light

****Accessibility & Location:****

Features

Building Name Unit 1
Zoning Industrial

Interior
Power 3 Phase Yes
Power Amps 60

Exterior
Open Parking Bays 4

Sizes
Floor Size 417m²
Building Height 7m

