



Nico Human
Non-Principal Property
Practitioner
Registered with PPRA
(FFC 113 663 3)
082 770 2128
nico.human@rawson.co.za



Rudi Papenfus
0849838226
rudi.p@rawson.co.za

Contact Rawson Commercial
Cape Metropole - Blouberg
Franchise

021 5562474

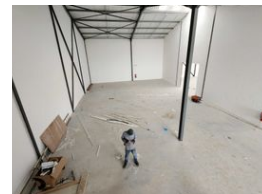
9 Blaauwberg Road
Blouberg
7441

399m² Warehouse To Let in Fisantekraal Industrial

FEATURED



Web Ref CL19075



R35,900 pm

Gross Monthly Rental R35,900 Excl. VAT

0 6

399m² WAREHOUSE TO LET IN FISANTEKRAAL

399m² Warehouse To Rent | Fisantekraal Industrial | Secure Business Park

This 399m² warehouse is centrally located in Fisantekraal Industrial, within an access-controlled business park with easy access off Wellington Road. The unit offers excellent height to eaves and peak, good natural light, 3-phase power, and a well-balanced combination of office and warehouse space.

Ideal for warehousing, light manufacturing, distribution, base of operations, or various commercial uses.

Key Features:

Standard reception area

Open-plan office upstairs

Warehouse kitchenette

Separate ablutions for office and warehouse staff

Features

Building Name	Unit 1
Zoning	Industrial
Interior	
Floor Loading Cap.	1 Tn/m ²
Power 3 Phase	Yes
Power Amps	50

Exterior	
Open Parking Bays	6

Sizes	
Floor Size	399m ²
Building Height	7m