



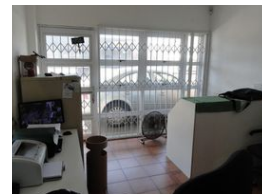
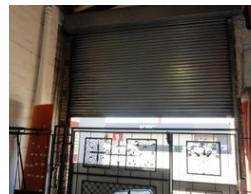
**Gavin Rudolph**  
Non-Principal Property Practitioner  
Registered with PPRA (FFC 117 094 8)  
082 554 3784  
gavin.r@rawson.co.za

Contact Rawson Commercial  
Cape Metropole - Blouberg Franchise

021 5562474

9 Blaauwberg Road  
Blouberg  
7441

242m<sup>2</sup> Warehouse To Let in Maitland



R16,940 pm

Gross Monthly Rental R16,940 Excl. VAT

0 4

## 242m<sup>2</sup> INDUSTRIAL WAREHOUSE TO LET IN MAITLAND

This strategically located property offers exceptional visibility with extensive signage opportunities for passing trade, coupled with easy truck accessibility for efficient loading and offloading of goods, accommodating even interlink vehicles.

Key features of this industrial unit include:

- \* Large, open-plan, double-volume rectangular warehouse space
- \* Sizable slide roller door suitable for trucks
- \* Office and staff component
- \* Two toilets
- \* 24-hour security-guarded entrance
- \* Direct frontage onto Voortrekker Road
- \* Proximity to Maitland station
- \* Interlink-friendly loading facilities

The unit is available for occupation from December 1st 2024. The monthly rental structure comprises a basic rental of R16 940.00

## Features

**Building Name**  
**Zoning**

Unit 1 Santos Park, 414 Voortrekker Road  
Industrial

**Interior**

Air Conditioning  
Power 3 Phase  
Power Amps

Yes  
Yes  
60

**Exterior**

Security  
Open Parking Bays

Yes  
4

**Sizes**

Floor Size  
Building Height

242m<sup>2</sup>  
7m

**Extras**

Basic rental of R16,940.00 plus operating costs of R2,796.21, totalling R19,736.00 excluding VAT.

