



**Nico Human**

Non-Principal Property Practitioner  
Registered with PPRA  
(FFC 113 663 3)  
082 770 2128  
nico.human@rawson.co.za



**Rudi Papenfus**

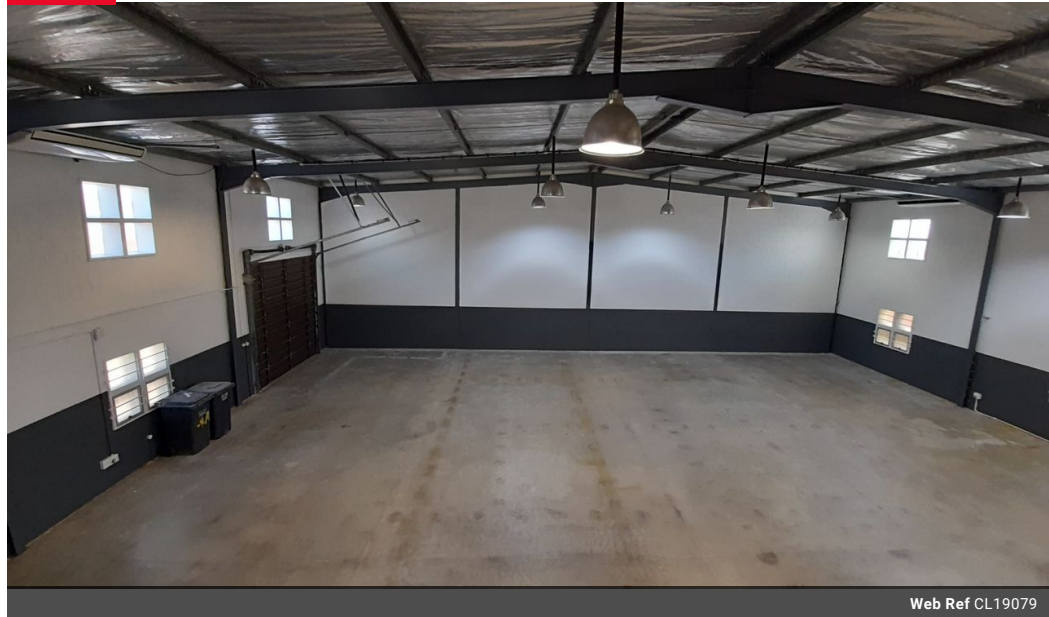
0849838226  
rudi.p@rawson.co.za

Contact Rawson Commercial  
Cape Metropole - Blouberg Franchise

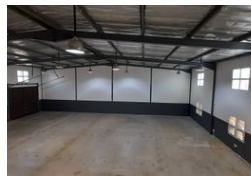
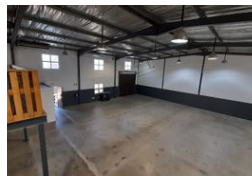
021 5562474

9 Blaauwberg Road  
Blouberg  
7441

### FEATURED



Web Ref CL19079



**R51,250 pm**

**Gross Monthly Rental** R51,250 Excl. VAT

0 4

### 410m<sup>2</sup> WAREHOUSE TO LET IN DURBANVILLE

410m<sup>2</sup> Warehouse To Rent in Durbanville Industrial – Secure Park with Excellent Access

This 410m<sup>2</sup> warehouse is centrally located in a secure, access-controlled business park in Durbanville Industrial, offering excellent accessibility from Wellington Road, Okavango Road, Brackenfell Boulevard, and the N1. Ideal for warehousing, light manufacturing, distribution, or a commercial base of operations.

The warehouse boasts excellent height to eaves and peak, good natural light, and 3-phase power with 60 amps. It includes dedicated office space and functional facilities to support both administrative and operational staff.

Key Features:

Secure access-controlled business park

Excellent height to eaves and peak

3-phase power (60 amps)

Good natural light

### Features

**Zoning** Industrial

#### Interior

Floor Loading Cap. 1 Tn/m<sup>2</sup>  
Power 3 Phase Yes  
Power Amps 60

#### Exterior

Open Parking Bays 4

#### Sizes

Floor Size 410m<sup>2</sup>