



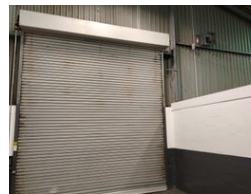
Gavin Rudolph
 Non-Principal Property Practitioner
 Registered with PPRA
 (FFC 117 094 8)
 082 554 3784
 gavin.r@rawson.co.za

Contact Rawson Commercial
 Cape Metropole - Blouberg Franchise

021 5562474

9 Blaauwberg Road
 Blouberg
 7441

228m² Warehouse To Let in Parow East



R19,380 pm

Gross Monthly Rental R19,380 Excl. VAT

0 3

228m² WAREHOUSE TO LET IN PAROW EAST

Spacious Double-Volume Warehouse To Let in Parow East

This versatile industrial unit is conveniently situated in a secure, guard-controlled business park in Parow East. The property is within easy walking distance of the bustling Voortrekker Road, offering excellent accessibility for staff, clients, and logistics.

The warehouse features a generous open-plan layout with double-volume height and a high roof, providing ample vertical storage space for racking or large goods. Natural light streams in through the skylight, reducing energy costs and creating a pleasant working environment.

Access is made easy with a truck-height roller shutter door, allowing for smooth loading and offloading of goods. The unit also includes a neat office area with a welcoming reception space, ideal for day-to-day admin operations.

Features

Zoning Industrial

Interior

Power 3 Phase Yes
 Power Amps 60

Exterior

Open Parking Bays 3

Sizes

Floor Size 228m²